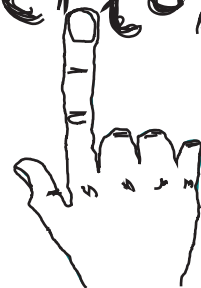




# map & DIRECTIONS



## Getting to Private Rooms Krakow:

### A) From the Main Train and Bus Station in Krakow

#### Tram or Bus

To get to the city from the bus station walk through the train station or the Galeria Krakowska Mall to the square in front. Then you'll have to go under the street to get to the tram / bus stop -- take a look at the map to see where. Before boarding the tram or bus you'll need to buy a ticket in a kiosk if it's open (say "*bilet normalny*") or from the machine on the tram or bus (with coins only, no notes).

Take tram no. 2 or bus no. 522. If you go by tram you should get off at the 3rd stop (by bus it's the 2nd stop). In both cases the stop is called "Filharmonia". Follow Floriana Straszewskiego Street (just go straight) and take the second turn if you came by tram or the first if by bus) to the right. You'll be on Plac na Groblach, and we're here at No.8.

#### Walk

If you have some time to spare (about 20-30 min.), the weather is nice and you're not weighed down by a gigantic backpack, why not walk here? It is a nice stroll and will give you a good first look at the city.

Walk through the pedestrian subway towards the city center. Take the exit straight ahead, and after reaching the top of the hill, continue walking to the left. The path goes via Planty (the park stretching around the Main Square area). After a while you'll see Dominikańska street (with tram tracks) crossing the Planty. Take it to the right. Go straight (it turns into Franciszkańska) until it crosses Straszewskiego street. Then turn left onto Straszewskiego. The First turn on the right is Plac na Groblach. You'll find our hostel here at No.8.

### B) From the Krakow Balice Airport

#### Train

Take the train from the Airport and get off at the Main Railway Station. Follow the instructions given on the left of this page. The train leaves every 30 min and costs 8 PLN. The whole journey takes 15 minutes. You'll get on the train about 200m from main airport terminal, and there's a free bus every few minutes if you don't want to walk. You can buy your ticket on the train.

#### Bus

Take bus No. 292 and get off next to the lower platform of the Main Bus Station (Dworzec Główny Wschód). Then follow the instructions on the left. The journey takes 45 minutes and requires a one-way ticket (called *bilet normalny*).

#### Taxi

Taking a taxi to the hostel from the airport costs about 75 PLN.

#### Arrival

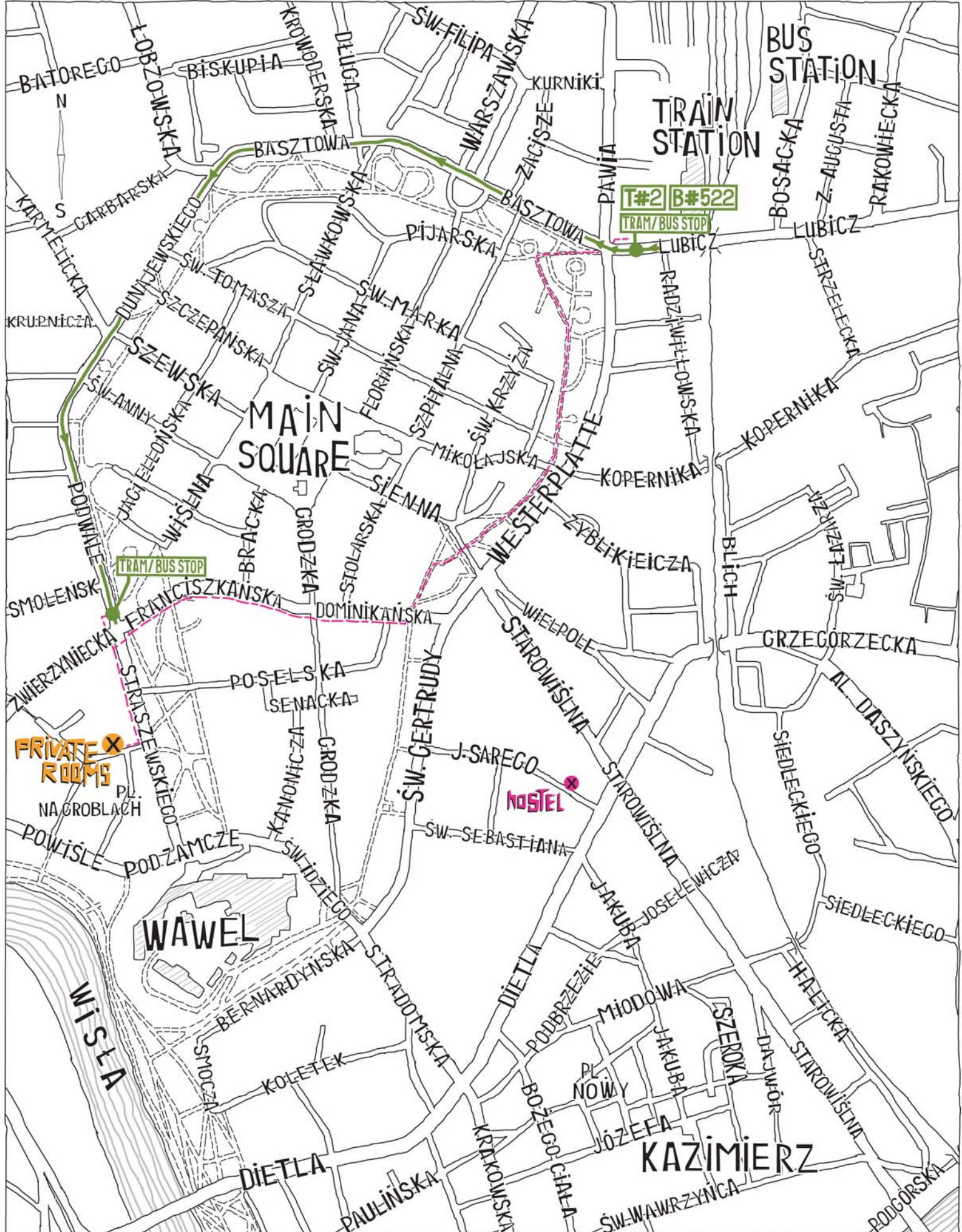
If your arrival plans have changed since contacting us, or if you'll be late for some reason please let us know by SMS to the mobile number listed below. Staff is waiting for you at the private rooms from 8:00 until 14:00, and if you arrive outside this time someone will be there especially to meet you. For this to happen, though, we need to know what time you will arrive. If you arrive unexpectedly, however, and contact the mobile number listed below someone will be there in about 20 minutes to check you in and give you your keys. After this you can come and go whenever you want.

## CONTACT

Phone land Line: +48 12 429 47 23

Text messages: +48 600805048

e-mail: info@travellersinn.pl



# map & directions

- TRAM/ BUS LINE
- FOOTPATH
- WALK

## KRAKÓW



travellers inn private rooms    krakow    pl. na groblach st 8/1  
 phone: + 48 12 429 47 23    mobile: + 48 600 805 048    e-mail: info@travellersinn.pl    www.travellersinn.pl